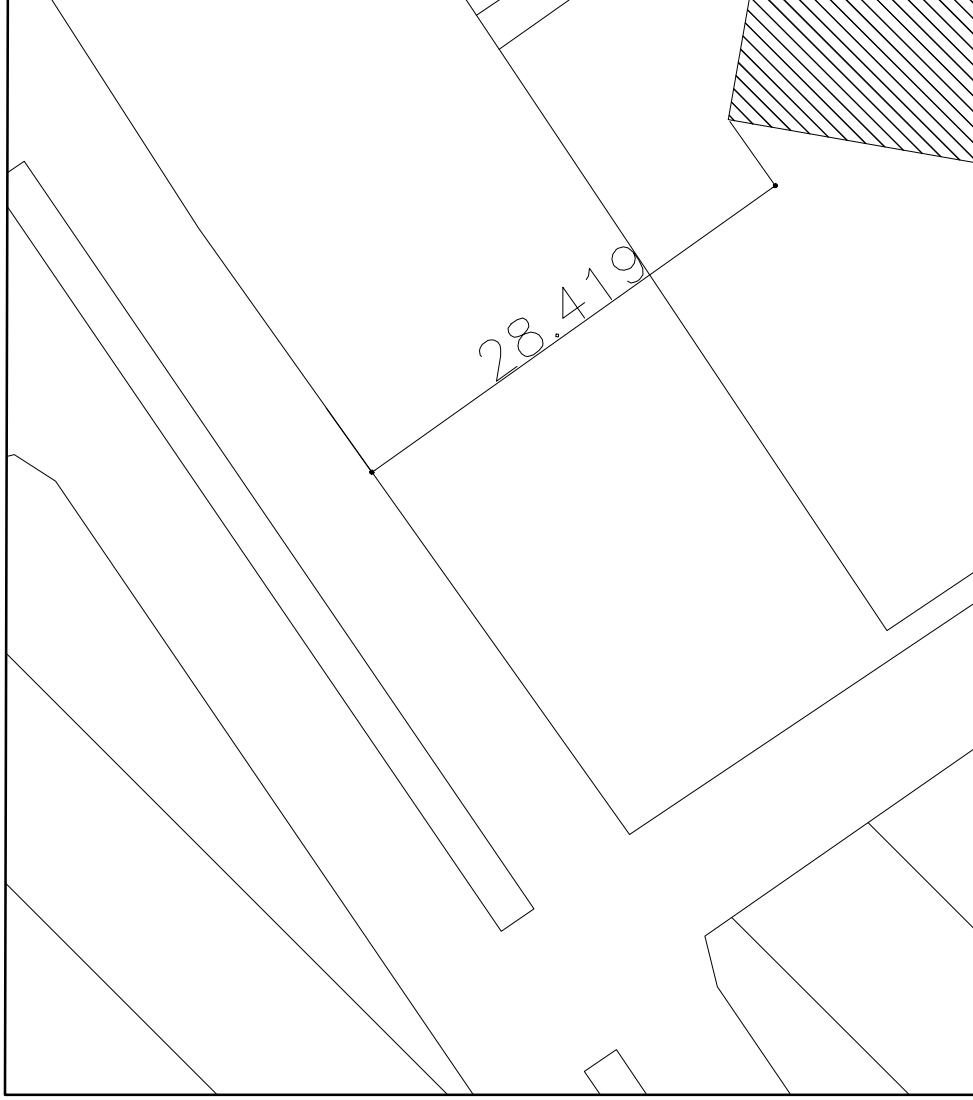
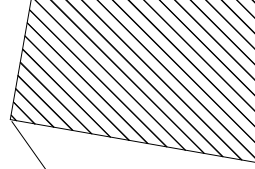


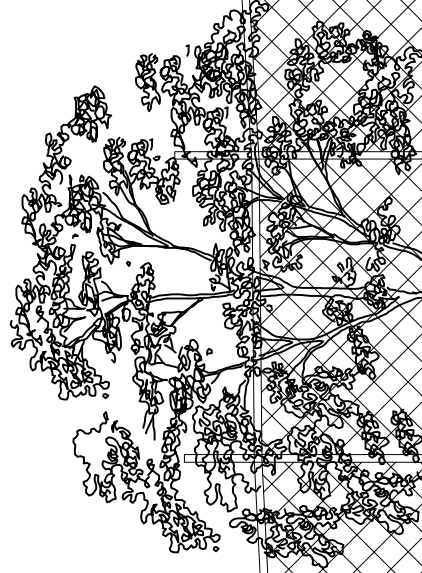
28.419



Treliça met
metálica

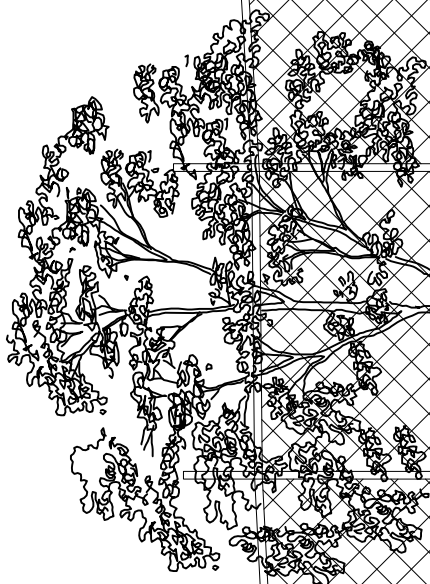
Fechamento em
chapa metálica

Tijolo de concreto 35x19x19
cobrimento sanitizante vedador - rasca



Rampa metálica
existente





Alambrado existente

Estrutura em treliça metálica com
pintura epoxi esmalte sintético

Veneziana fixa - vidro de 6mm

Perfil metálico com pintura em
esmalte sintético, cor: branco
Tijolo de concreto, 39x19x19
com impermeabilizante incolore fosco

Faixa metálica
existente

5.40

130.60

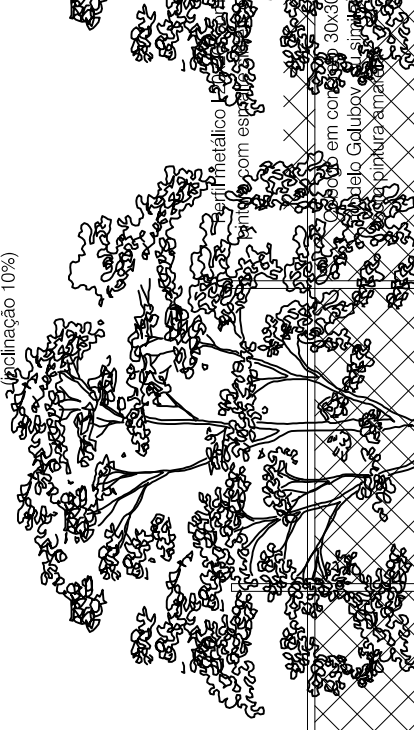
130.40

130.20

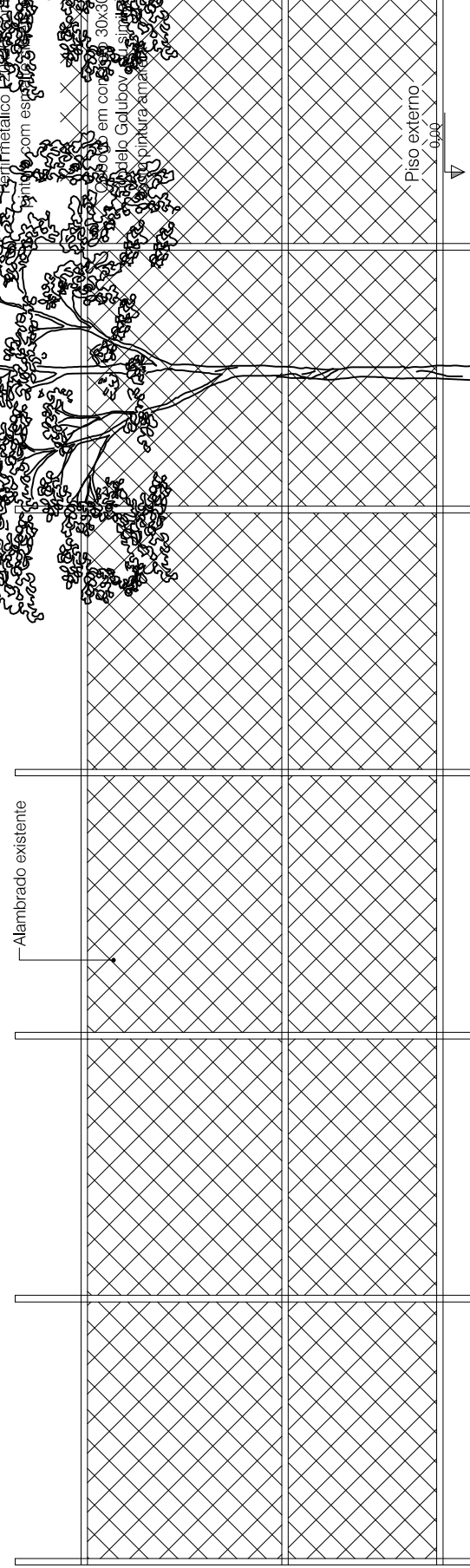
130

129.80

Telha metálica tipo sanduíche aço, com isolant
termo-acústico, pré-pintada nas duas faces- co
inclinação 10%



Alambrado existente



Piso externo
0.00

130.80

130.60

130.40

130.20

130

